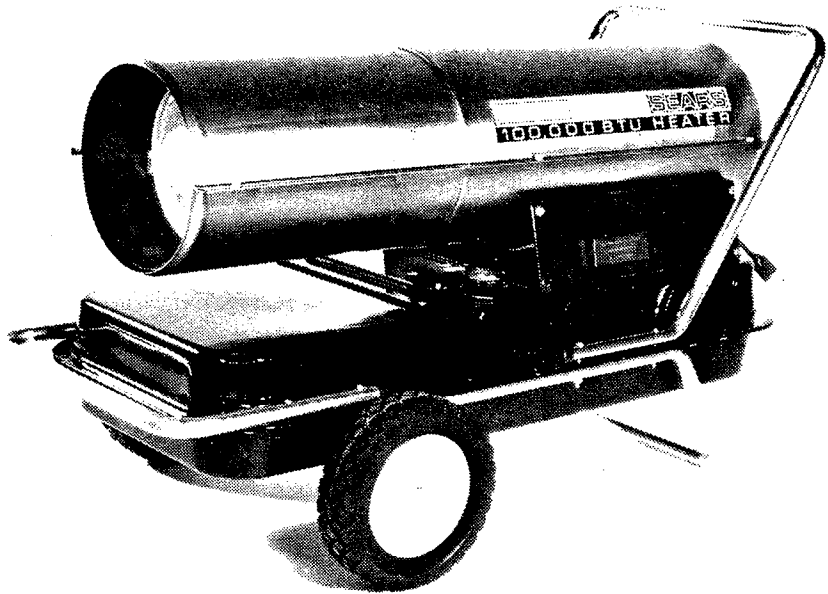


Sears

**OWNERS
MANUAL**

MODEL NO.
583.400070

SERIAL NO.



CAUTION:
**Read Rules for
Safe Operation
and Instructions
Carefully**

**100,000 BTU
PORTABLE HEATER**

**Operation and Maintenance
Instructions with Parts List**

Sears, Roebuck and Co., Chicago, Ill. 60684

FULL ONE YEAR WARRANTY

For one year from the date of purchase, Sears will repair any defect in material or workmanship in this portable heater at no charge.

If the portable heater is used for commercial or rental purposes, this warranty applies for only thirty days from the date of purchase.

Warranty service is available by contacting the nearest Sears store or Service Center throughout the United States.

This warranty gives you specific legal rights, and you may also have other rights which vary from state to state.

Sears Roebuck and Co.

Sears Tower

BSC 41-3

Chicago, IL 60684

RULES FOR SAFE OPERATION

LOOK FOR THIS SYMBOL TO POINT OUT IMPORTANT SAFETY PRECAUTIONS.

WARNING

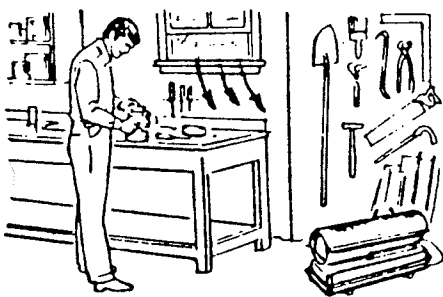
IT MEANS ATTENTION; BECOME ALERT. YOUR SAFETY IS INVOLVED.

IMPORTANT: Read and Understand Instruction Manual before Starting or Working on your Heater.

IMPROPER USE OF THIS HEATER CAN RESULT IN SERIOUS BODILY INJURY DUE TO HAZARDS OF FIRE OR EXPLOSION, CARBON MONOXIDE POISONING, BURN, AND ELECTRICAL SHOCK

- Use ONLY Kerosene or Number 1 Fuel Oil. NEVER BURN GASOLINE, NAPHTHA, PAINT THINNERS, ALCOHOL OR OTHER VOLATILE FUELS!
- Use ONLY IN AREAS FREE OF FLAMMABLE VAPOR OR HIGH DUST CONTENT. NEVER USE HEATER WHERE GASOLINE, PAINT THINNER OR OTHER HIGHLY FLAMMABLE VAPORS ARE PRESENT.
- MAKE SURE HOT AIR OUTLET IS AT LEAST 5 FEET FROM COMBUSTIBLE MATERIALS.
- NEVER USE HEATER IN ROOMS USED FOR SLEEPING.
- USE ONLY IN WELL VENTILATED ROOMS. Provide ventilation of AT LEAST 3 SQUARE FEET FOR EACH 100,000 BTU OF RATING.
- WHEN USED WITH THERMOSTAT. HEATER MAY START ANYTIME!
- KEEP CHILDREN AWAY FROM HEATER AT ALL TIMES-NEVER LEAVE A HEATER PLUGGED IN WITHOUT AN ADULT PRESENT IF CHILDREN ARE LIKELY TO BE PRESENT.
- Use Only with electrical voltage and frequency specified on model plate.
- Use ONLY A PROPERLY GROUNDED THREE-WIRE EXTENSION CORD.
- DO NOT MOVE, HANDLE OR SERVICE WHILE HOT OR BURNING.
- Use ONLY in accordance with local Ordinances and codes.
- NEVER ATTACH DUCTWORK TO FRONT OF HEATER.

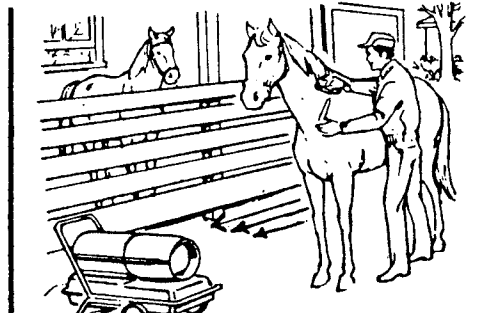
Safety requirements and model plate data comply with American National Standard Institute safety requirements. ANSI A10. 10-1970



Winter Workshop



Construction Sites



Animal Stables

Examples of fresh air ventilation & heater application. Refer to page 4, section on ventilation, for correct requirements

INTRODUCTION

Congratulations . . . you have just purchased one of the finest oil-fired heaters on the market today. Your Sears portable heater has been designed and engineered to provide you with years of warm comfort. We encourage you to read this manual carefully before using.

Safety Rules	Pg. 2	Taking Care Of Your Heater	Pg. 5-6
Table of Contents	Pg. 3	Trouble Shooting	Pg. 7-10
Introduction	Pg. 3	Repair Parts & Illustrations	Pg. 11-14
How To Use Your Heater	Pg. 4-5	Optional Accessories	Pg. 14
		Adjustment of Pump Pressure	Pg. 14

HOW TO USE YOUR HEATER

ELECTRICAL INFORMATION

This heater works on regular household current 120 volts, 60 cycles; unit uses 5.00 amps AC current. Use the 3-prong plug provided with the heater and use ONLY with grounded electrical power outlets.

When using an extension cord, make certain that it is a 3-Wire (grounded) cord of proper wire size.

Cord Length (ft)	0-75	75-125	125-200
Wire Size (AWG)	no. 18	no. 16	no. 14

FUEL

CAUTION: NEVER USE VOLATILE FUELS SUCH AS GASOLINE, NAPHTHA OR ALCOHOL.

NEVER FILL TANK WHILE HEATER IS PLUGGED IN.

This heater is made to operate on kerosene or number 1 fuel oil. These fuels can be obtained at your local fuel oil supplier or service station.

Cold temperature may cause fuel to thicken. This may require an anti-icer such as "HEET", METHANOL ALCOHOL FROSTEX. Follow directions on container.

VENTILATION

CAUTION: USE ONLY IN WELL VENTILATED AREAS. PROVIDE AT LEAST THREE (3) SQUARE FEET OF FRESH AIR FOR EACH 100,000 BTU RATING. IT IS BEST TO HAVE CROSS VENTILATION OF THE AREA IF POSSIBLE.

EXAMPLE: Your 100,000 BTU heater will require a two car garage door, raised 2 inches or a single car garage door raised 6 inches. A window can also be used for ventilation. The 100,000 BTU heater requires at least 2 thirty inch windows raised 7½ inches.

DO NOT USE WHERE FLAMMABLE VAPOR IS PRESENT OR WITHIN (5) FEET OF MATERIAL THAT CAN CATCH ON FIRE.

NEVER USE HEATER IN SLEEPING AREAS.

NEVER LEAVE HEATER RUNNING UNATTENDED WHEN CHILDREN ARE IN THE AREA.

TO START HEATER

Fill the heater with kerosene or No. 1 fuel oil. Plug the accessory control (if used) or the jumper plug into the receptacle located on the left side of the heater.

Plug the heater into a grounded outlet of 110-120V, 60 cycles (HZ) alternating current only.

Make sure the RESET BUTTON (See P-1) is pushed in. The heater will not operate if this button has been left in the "OUT" position.

RESET BUTTON

Should the heater fail to ignite or stops during operation, press the reset button at the rear of the heater as indicated by arrow. The heater should start immediately.

Should it fail to start within 15-25 seconds, the reset button will pop out and the safety control will cut off all power to the heater.

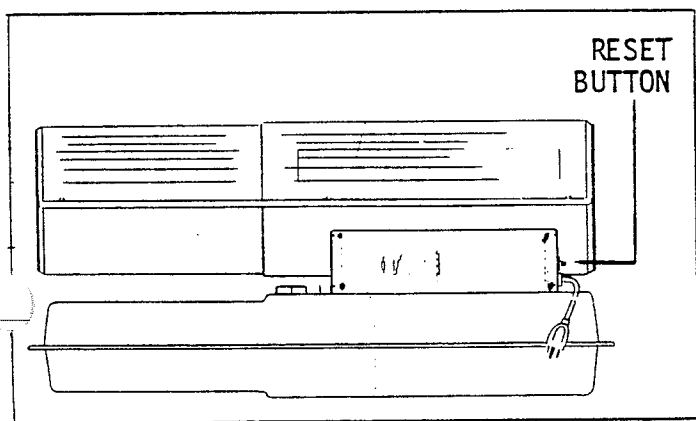


Figure P-1, Location of Reset Button

Disconnect the heater and check the reason for failure. Refer to the TROUBLE SHOOTING section for determining the possible cause and possible correction.

To restart heater wait 2 to 3 minutes for the safety control to cool, and then press the reset button. See Figure P1.

STOPPING

CAUTION: AIR DISCHARGE END OF HEATER WILL BE HOT. ALLOW TO COOL BEFORE MOVING OR HANDLING.

To STOP the heater, simply unplug the power cord from the outlet.

For units using the Optional Accessories, follow the instructions provided with the accessories.

STORAGE

Drain fuel tank completely, prior to storing.

Remove and clean; or replace, air filters and spark plug as outlined in maintenance section.

Store in a dry place, free of corrosive fumes and dust.

When taking heater out of storage, follow the maintenance procedures if they were not done before storage.

WIRING DIAGRAM

The wiring diagram Figure P-2 is shown so the owner will be able to follow the schematic in the event of a replacement of an electrical component.

A wiring diagram decal is placed inside the left control panel.

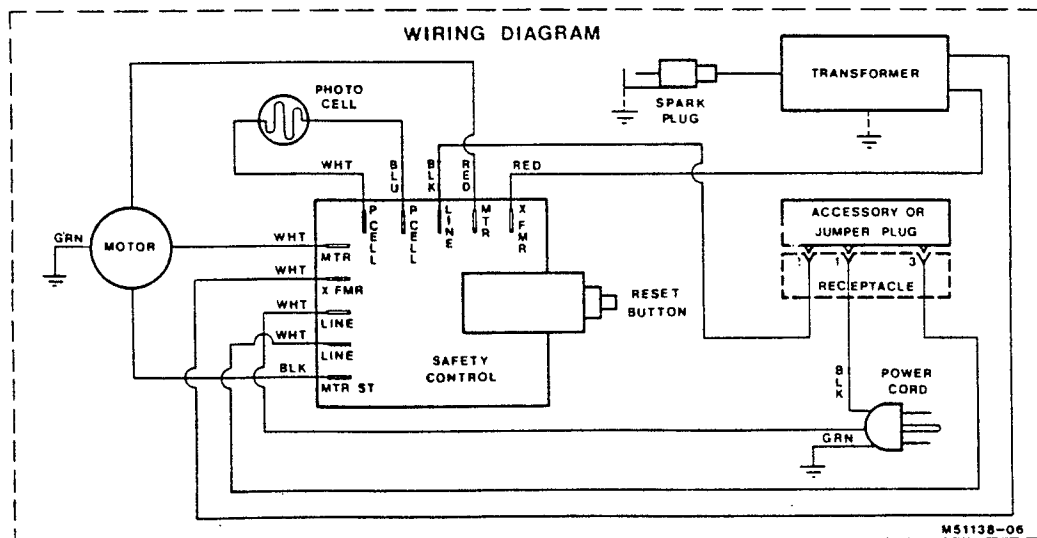


Figure P-2. Wiring Diagram

TAKING CARE OF YOUR HEATER

The instructions contained in this section of the manual will allow you to keep your heater operating at maximum efficiency.

CAUTION: DO NOT WORK ON YOUR HEATER WHEN THE POWER CORD IS PLUGGED IN. MAKE AN OVERALL INSPECTION OF THE HEATER. BE SURE THE UNIT IS CLEAN. CHECK FOR LEAKS. INSPECT THE ELECTRICAL CORD FOR DETERIORATION AND DAMAGE.

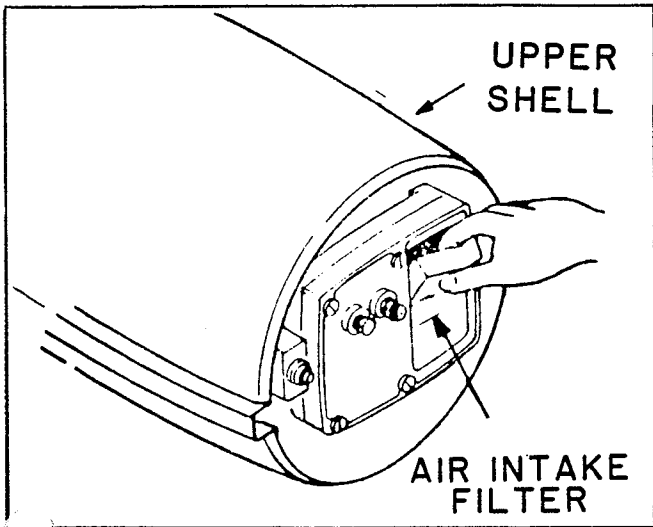


Figure P-3, Access To Filters
Note: The Fan Guard Must Be Removed First

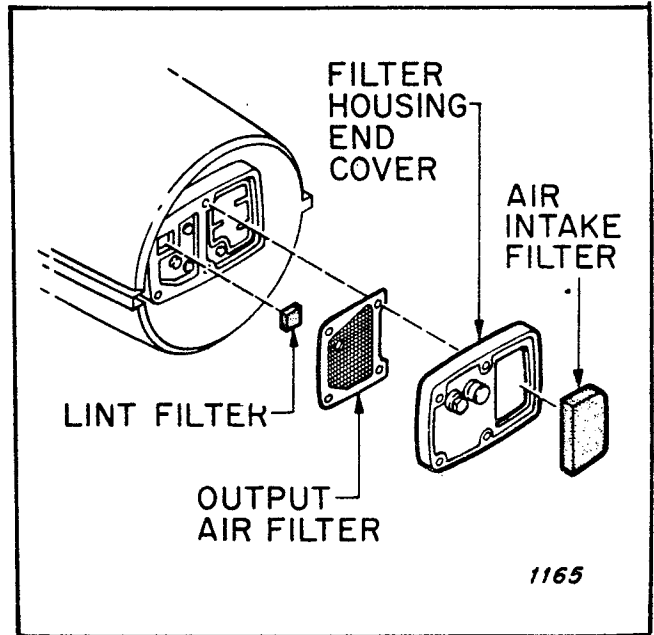


Figure P-4, Access To Filters
Note: The Fan Guard Must Be Removed First

AIR FILTERS

The air filter should be changed at the beginning of each heater season, or after 250 hours of operation. Check and clean the air intake filter whenever a film of dust can be seen on its outside surface. Clean this filter daily if the heater is used in dusty air. (See Figure P-3 & P-4)

Simply pull the filter out of its housing and wash with a mild detergent and hot or cold water. Dry it well before installing it into end cover. Make sure there is no space between filter and housing.

IMPORTANT: DO NOT oil air filter element.

To reach the output and lint filters, remove the three screws attaching filter housing end cover and take out the end cover and output air filter. Pick out the lint filter. Install a replacement lint filter and output air filter, then reinstall the filter housing end cover and secure with screws.

FUEL TANK

CAUTION: NEVER USE VOLATILE FUELS SUCH AS GASOLINE, NAPHTHA OR ALCOHOL - THIS HEATER IS MADE TO OPERATE ON KEROSENE OR NO. 1 FUEL OIL. NEVER FILL FUEL TANK WHILE HEATER IS PLUGGED IN.

Drain the fuel tank after each 150 to 200 hours of use, before storage.

Flush it out with clean fuel. Wipe the inside of the fuel cap with a lint free cloth.

Refill with clean fuel if further use of heater is needed.

NOTE: The following MAINTENANCE instructions require the removal of the upper shell.

REMOVING THE UPPER SHELL

(See Figure P-3)

Remove the upper shell by removing the screws on each side and lift off. Pull one side and lift up.

To replace, align the holes of the upper shell with those of the lower shell and install the screws.

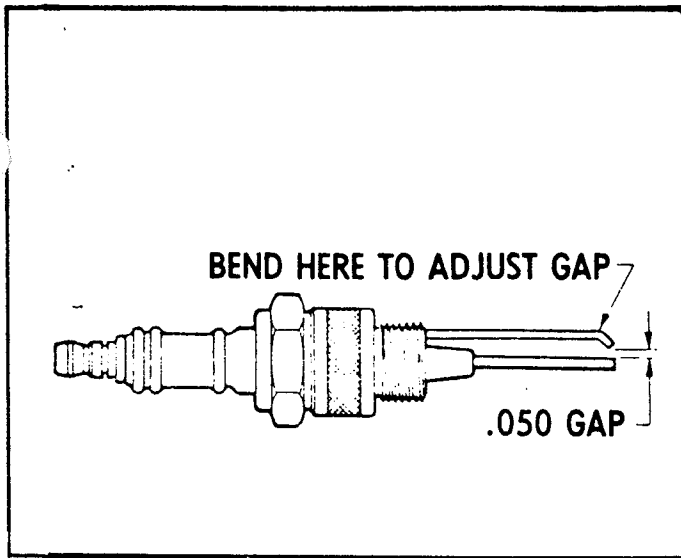


Figure P-5. Spark Plug Gap Setting

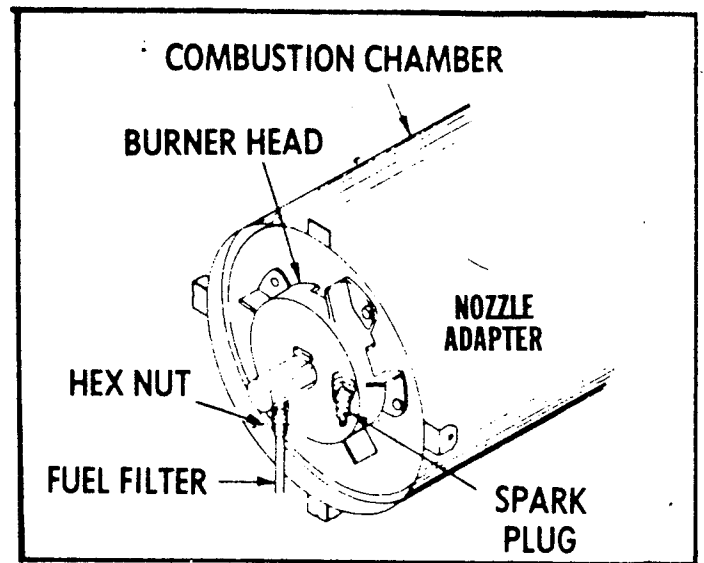


Figure P-7. Location of Burner Head

THE MOTOR IS SEALED AND WILL NOT NEED LUBRICATION.

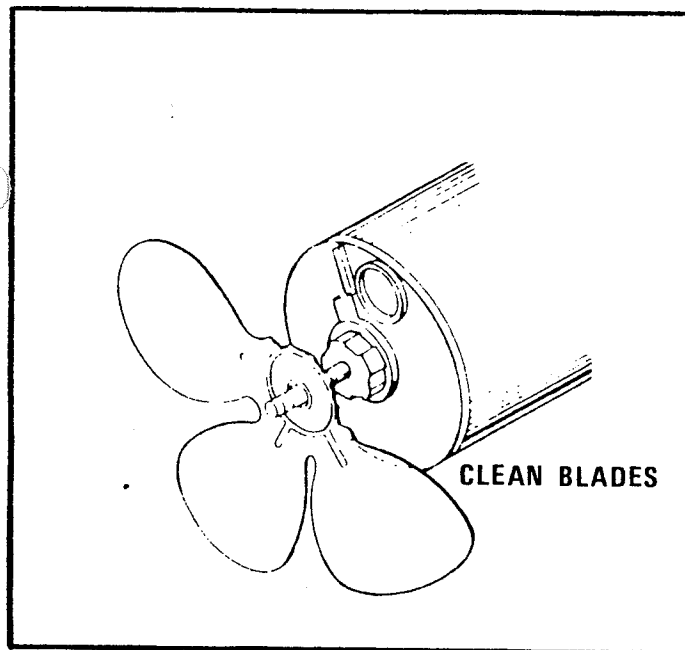


Figure P-6. Clean Fan Blades

CLEANING THE FAN

Clean fan blades whenever you can see the blades are dirty. A build-up of dirt will reduce the air supply and alter the combustion characteristics.

Wash the blades with a detergent and water. Be very careful to prevent bending the blades. Dry blades well.

PRINTED CIRCUIT BOARD

This model of heater has a Printed Circuit Board (PCB) in it. All the wires from the electrical parts are connected to the PCB.

The Safety Control and the Motor Start Relay is also a part of the PCB.

The Wiring Diagram P2 will help you in finding the correct wire connections.

SPARK PLUG

CAUTION: MAKE CERTAIN THE POWER CORD IS NOT PLUGGED IN. THE SPARK PLUG WIRE IS AT HIGH VOLTAGE AND FAILURE TO UNPLUG THE UNIT CAN CAUSE SERIOUS SHOCK.

At the beginning of each heater season and every 300 hours of use after, remove the burner head and remove, clean and adjust spark plug electrodes. (See figure P-5)

If electrodes are burned or eroded, replace plug. Install plug in burner head as shown in figure P-10.

ELECTRICAL

CAUTION:

CAUTION: DO NOT SERVICE HEATER WHEN POWER CORD IS PLUGGED IN.

Electrical maintenance of electrical cord, wiring, connections and components for deterioration, damage and looseness.

Refer to wiring diagram on the under side of upper shell.

Repair or replace as needed or see your nearest Sears Service Center.

TROUBLE SHOOTING

SYMPTOM	POSSIBLE CAUSE	CORRECTIVE ACTION
<p>Motor does not start; thermostat (if used) is set to call for heat.</p>	<p style="text-align: center;">Electrical Troubles</p> <p>1. No power or low voltage at heater.</p>	<p>1a. Be sure power is reaching heater; check condition of heater cord. Repair or replace as needed.</p> <p>b. Use extension cord with wires heavy enough to carry the electrical load of the heater.</p> <p>c. Be sure voltage at outlet is same as shown on heater instruction plate.</p>
	<p>2. Damaged motor,</p>	<p>2a. Check motor.</p> <p>b. Replace a defective motor.</p>
	<p>3. Thermostat damaged (if used).</p>	<p>3. Replace. Not a serviceable part.</p>
	<p style="text-align: center;">Mechanical Troubles</p> <p>1. Fan obstructed by mechanical damage or dirt.</p>	<p>1a. Check for bent outer shell.</p> <p>b. Check for damaged fan; replace if defective.</p> <p>c. Check for damaged motor mount.</p> <p>d. Check for tight pump.</p>
<p>Heater will not ignite, but motor runs for a short time.</p>	<p style="text-align: center;">Fuel System Troubles</p> <p>1. Fuel tank empty, water in fuel, wrong fuel.</p>	<p>1a. Check for water in tank; clean tank and fuel filter if water is found. (Water in the tank will form globules in the bottom which you can see.)</p> <p>b. Fill tank with fresh, clean fuel.</p>
	<p>2. Fuel filter clogged.</p>	<p>2. Remove and wash in clean fuel. Blow dry and replace.</p>

TROUBLE SHOOTING

SYMPTOM	POSSIBLE CAUSE	CORRECTIVE ACTION
<p>(continued)</p> <p>Heater will not ignite, but motor runs for a short time.</p>	<p>3. Nozzle plugged or defective.</p>	<p>3a. Clean by blowing compressed air through nozzle from outlet end of nozzle. b. Replace nozzle if cleaning does not solve the problem.</p>
	<p>4. Very low temperature may cause fuel to thicken and not flow.</p>	<p>4. Use a non toxic anti-icer such as "Heat", "Methanol Alcohol", or "Frostex."</p>
	<p>5. Dirty air filters.</p>	<p>5. Be sure air filters are clean.</p>
	<p>6. Air leak at fuel filter.</p>	<p>6. Check fuel filter for air leaks and for tightness of fit where it is connected to fuel line.</p>
	<p>Ignition Troubles</p>	
	<p>7. Defective spark plug. (Wrong gap, plug wet with fuel or electrodes carboned, or plug damaged.)</p>	<p>7. Gap between electrodes should be .050 or about thickness of a dime. Adjust electrode gap. Inspect plug for worn or eroded electrodes. Replace a damaged spark plug.</p>
	<p>8. Spark plug wire disconnected from plug or from terminal of transformer.</p>	<p>CAUTION: Disconnect heater cord! 8. Check at plug and transformer to be sure wire is tight at both ends.</p>
<p>Heater burns, but puffs of smoke can be seen; heater will not burn steady; heater burns with odor; heater smokes continuously.</p>	<p>Improper Fuel-Air Mixture (Not enough fuel)</p> <p>1. Heater running out of fuel; water condensation in fuel tank; wrong fuel.</p>	<p>9. Disconnect spark plug wire from transformer, and check transformer for spark; replace if no spark can be obtained.</p> <p>1a. Shut heater off; check fuel tank. If you can see globules of water in the bottom, drain and flush the tank and filter with clean fuel.</p>
		<p>b. Refill with fresh, clean fuel.</p>

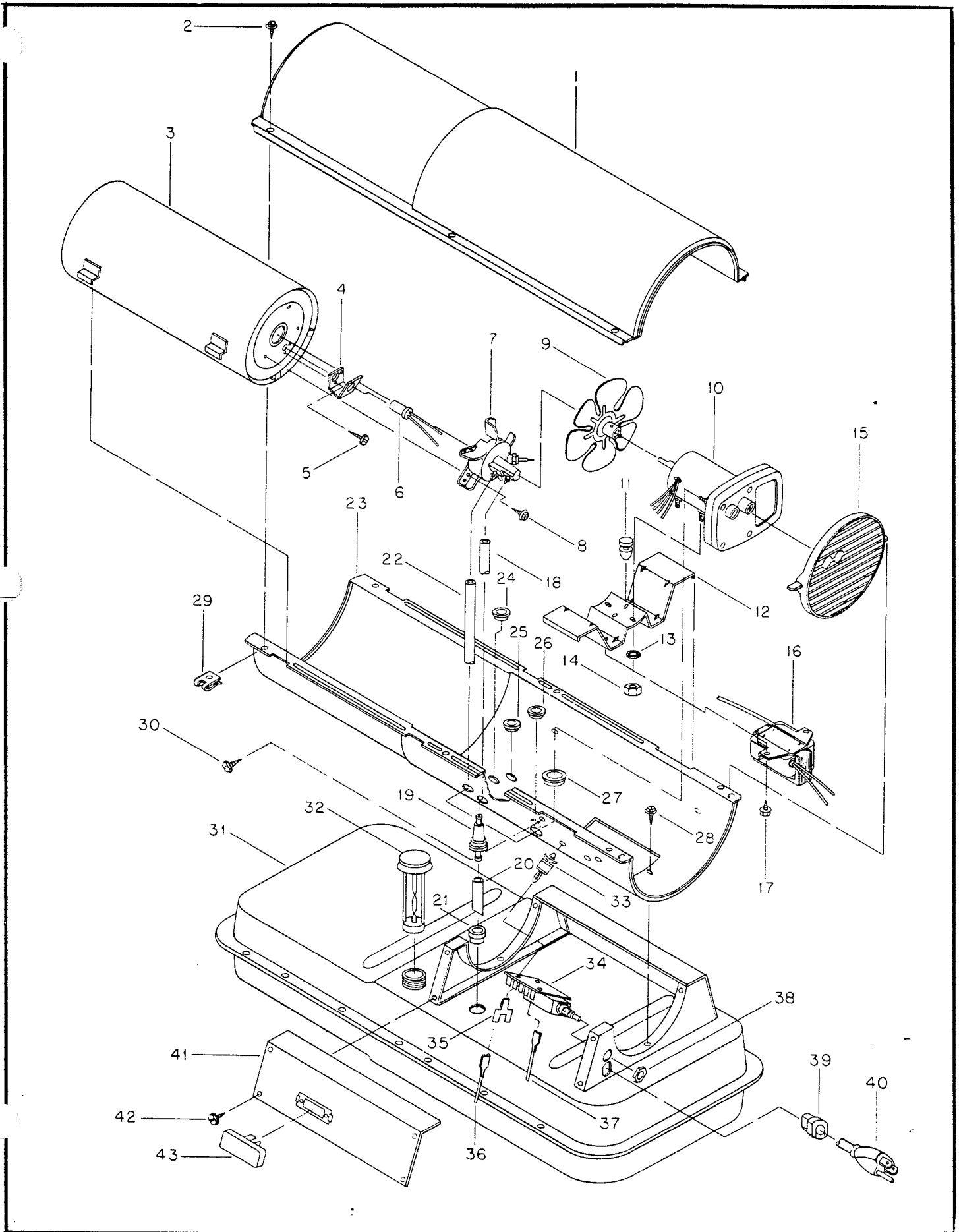
TROUBLE SHOOTING

SYMPTOM	POSSIBLE CAUSE	CORRECTIVE ACTION
(Continued) Heater burns, but puffs of smoke can be seen; heater will not burn steady; heater burns with odor; heater smokes continuously.	2. Dirty air filters causing reduced air flow through nozzle, resulting in low fuel flow.	2. Remove and clean the air filters. Be sure air intake is not blocked.
	3. Fuel filter loose, dirty or connection loose.	3a. Remove and wash fuel filter in clean fuel. b. Check condition of connection between fuel line and burner. c. Replace with new fuel line.
	4. Dirty nozzle.	4a. Remove and clean the burner head. b. Blow compressed air through nozzle from outlet end. c. Never use a drill, wire, or other tool to open a nozzle passage.
	5. Fan blade.	5. Check for excessive dirt accumulation on fan blade which could be causing motor to slow down.
	6. Loose air output line connections between filter housing and burner.	6. Be sure connections are tight.
	7. (Remote possibility), Rubber sleeve on shank of nozzle is leaking.	7. If heater puffs intermittently, replace the rubber sleeve. (Handle parts carefully to prevent damage, assemble them carefully to preserve airtightness.)
	Flames come out front of heater.	Improper Fuel-Air Mixture (Too much fuel, or not enough air for amount of fuel being supplied.)
1. Dirty fan, or air passageway through heater blocked by dirt or trash.		1. Clean the fan. Be sure the air passageway through the heater is clean. Keep the heater clean.
2. Fan loose or improperly located on shaft.		2. Check fan; correct if not right.
3. Bent or damaged fan.		3. Replace. Do not attempt repair of fan.
4. High pump pressure		4. Check pressure
5. Air intake blocked	5. Check filters	

TROUBLE SHOOTING

SYMPTOM	POSSIBLE CAUSE	CORRECTIVE ACTION
Heater cycles intermittently.	Electrical System Troubles 1. Thermostat set too low. (if used)	1. Set thermostat to a higher temperature for more even operation.
	2. Defective thermostat. (if used)	2. Replace a defective thermostat.
	3. Low voltage causing tripout of safety control.	3. Check power line voltage. Use extension cord with proper size wire.
	4. Defective electrical supply or defective connections.	4a. Be sure extension cord and heater service cord are in good condition, without intermittent open circuits. b. Check mechanical and electrical soundness of all wiring connections in the heater and service cord.
Heater ignites, but button of safety control circuit breaker pops out anyway	1. Defective photo cell.	1. Check to see if glass face of cell is so dirty it can't "see" the flame; clean glass if dirty. Replace with a cell that is known to be good.
	2. Defective safety control.	2. Replace with a control that is known to be good.
	3. Defective electrical connections in circuit through cell and control.	3. Be sure all solder joints and wiring connections are secure. Check wiring diagram.
Safety Control circuit breaker fails to trip when a no-flame condition exists.	1. Defective circuit breaker.	1a. Replace with a circuit breaker that is known to be good. b. Replace with a new printed circuit board.
	2. Control dirty or defective.	2a. Replace defective control with one that is known to be good. b. Replace the printed circuit board.
	3. Photocell electrical leads shorted.	3. Check photocell leads for shorted leads. Replace photocell if damaged.
Button on safety control circuit breaker won't stay in when pressed.	1. Resetting is tried too soon after the breaker trips.	1. Wait 5 minutes and try again.
	2. Defective circuit breaker.	2a. Replace with a circuit breaker that is known to be good. b. Replace with a printed circuit board.
	3. Photo cell circuit open.	3. Check photocell for open condition. Replace if damaged.

MODEL 583.400070 HEATER ASSEMBLY
EXPLODED VIEW



**PARTS LIST FIGURE P-8
MODEL 583.400070 HEATER ASSEMBLY**

Key No.	Part Number	Parts Description	Quantity
1	M51072-01BB	Shell Upper	1
2	M15823-27	Screw, Hex Head # 10-32 x ½	6
3	M51075-01	Assembly Heat Shield & Comb. Chamber	1
4	M16660	Bracket Photo Cell	1
5	M10908-2	Screw, Hex Head # 6-32 x 3/8	2
6	M16656-4	Photo Cell Assembly	1
7	M51126-01	Burner Head Assembly, Refer To Top For Details	
8	M11084-26	Screw, Hex Head # 10-12 x 3/8	3
9	M51153-01	Fan	1
10	M23149-14	Motor & Pump Assembly, Refer To Top For Details	
11	M50631	Bumper, Rubber	2
12	M51074-01	Bracket, Motor Mount	1
13	WL1-4C	Washer-Lock Internal Teeth	2
14	NJC-4C	Nut, Jam	2
15	M51114-01	Guard, Fan	1
16	M50570-04	Transformer, 5000 Volt	1
17	M11084-26	Screw, Hex Head # 10-12 x 3/8	2
18	M50814-05	Line, Fuel	1
19	M51150-01	Filter, Fuel	1
20	M51151-01	Filter, Fuel	1
21	M10990-3	Bushing, Rubber	1
22	M50814-06	Line, Air	1
23	M51073-01BB	Lower Shell	1
24	M30865-02	Bushing, Open/Closed	1
25	M30865-02	Bushing, Open/Closed	1
26	M30865-02	Bushing, Open/Closed	1
27	M50104-02	Bushing, Shorty	1
28	M11084-26	Screw, Hex Head # 10-12 x 3/8 (Fastens Lower To Bracket)	6
29	M11271-8	Nut, Zip	6
30	M15823-37	Screw, Hex Head # 8-15 x ¼	1
31	M51115-01AA	Tank, Fuel, Assembly	1
32	M51027-07	Fuel Cap & Gage	1
33	M51122-01	Support, Circuit Board	3
34	M51060-02	Circuit Board	1
35	M51164-01	Terminal, Spade-Attaches To Neutral Line On PC Board	1
36	M9900-171	Wire, Assembly, White-Attaches To Terminal # 3 On Jumper Plug)	1
37	M9900-170	Wire Assembly, Black (Attaches To Terminal # 2 on Jumper Plug)	1
38	M51157-01	Nut, Hex	1
39	M11143-1	Bushing, Strain Relief	1
40	M10813-83	Extension Cord Assembly (Power Cord)	1
41	M50591-02	Side Cover, Assembly	1
42	M11084-26	Screw, Hex Head # 10-12 x 3/8 (Attaches Side Cover)	4
43	M50826	Plug Jumper	1

**FIGURE P-9 PARTS LIST
MOTOR PACKAGE ASSEMBLY
MODEL 583.400070**

Key No.	Part Number	Parts Description	Quantity
—	M23149-14	Assembly Motor & Pump	1
1	M51131-01	Motor, Split Single Phase	1
2	M8645	Pump Body	1
3	FHPF3-4C	Screw No. 10-32 x ½	2
4	M22009	Insert	1
5	M22456-1	Rotor, Pump	1
6	M50545	End Cover, Pump	1
7	M12179	Filter, Intake	1
8	M16545	End Cover, Filter	1
9	M8940	Ball, Steel ¼ Dia	1
10	M10993-1	Spring, Pressure Relief	1
11	M27694	Screw, Adjusting	1
12	M22997	Plug, Pipe	1
13	M12461-31	Screw, Hex HD No. 10-32 x 1 Inch (Attaches Filter End Cover To Pump End Cover)	4
14	M12244-1	Filter, Assembly (output)	1
15	M12461-32	Screw, Hex Head No. 10-32 x 1 1/8 Inch	6
16	M11637	Filter, Lint	1
17	M50820-02	Fitting, Barb	1
18	M8643	Blade	4

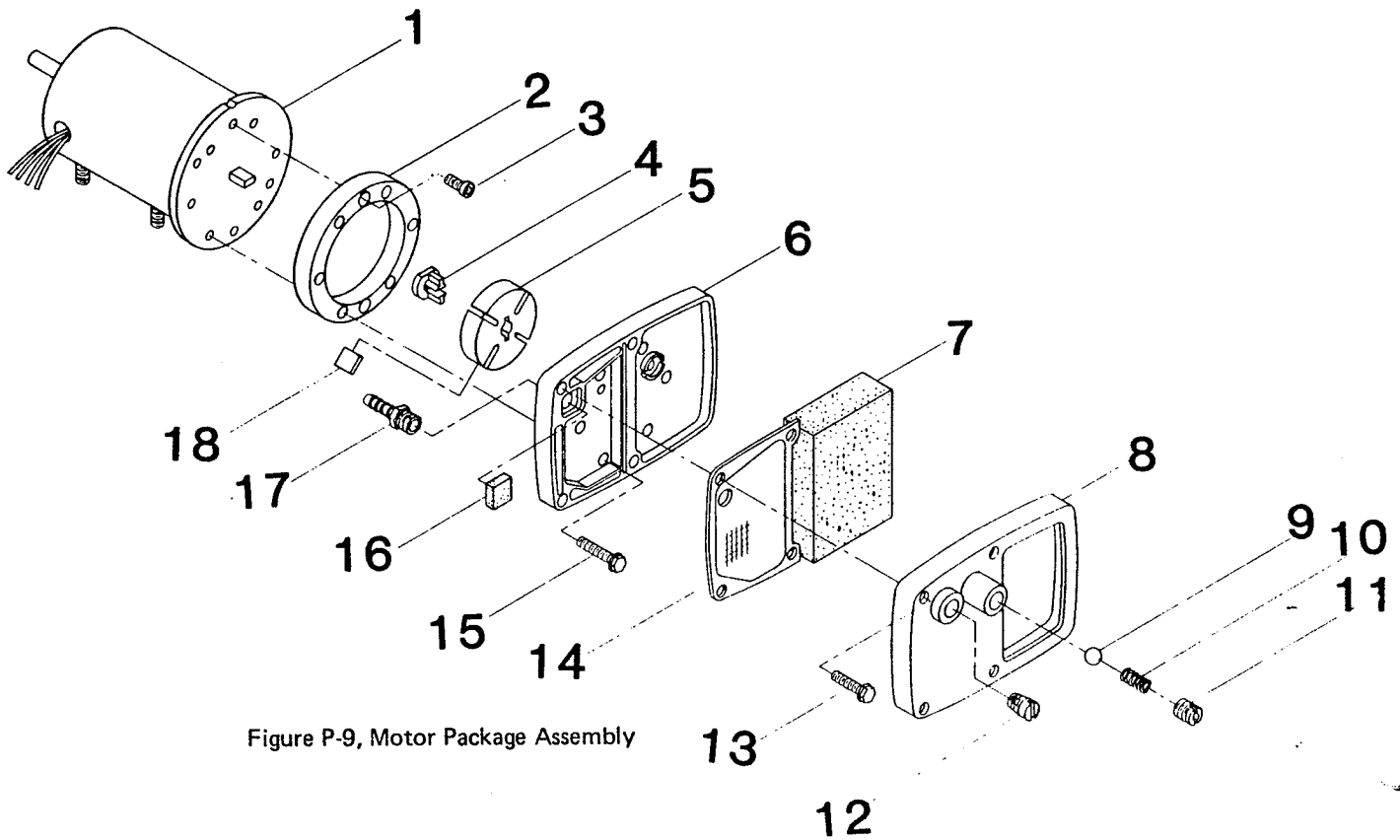


Figure P-9, Motor Package Assembly

**FIGURE P-10 PARTS LIST
BURNER HEAD ASSEMBLY
MODEL 583.400070**

Key No.	Part Number	Part Name or description	Quantity
1	M51126-01	Burner Head Assembly	1
2	M51120-01	Nozzle	1
3	M10659-1	Washer, Nozzle Seal	1
4	M10809-1	Spring, Nozzle Seal	1
5	M10659-1	Washer, Nozzle Seal	1
6	M8882	Seal, Nozzle, Sleeve	1
7	M50924-03	Body, Burner Head	1
8	M50820-02	Fitting, Barb	1
9	M50820-02	Fitting, Barb	1
	M10962-2	Spark Plug	1

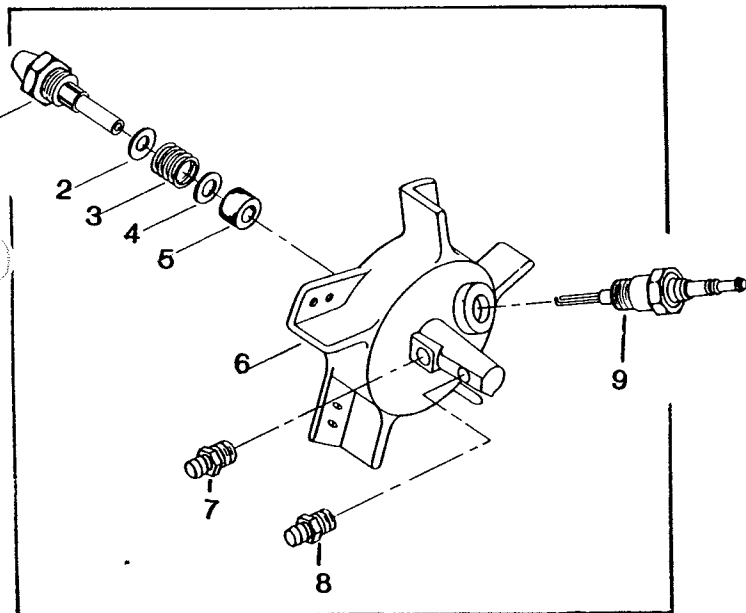


Figure P-10, Burner Head Assembly

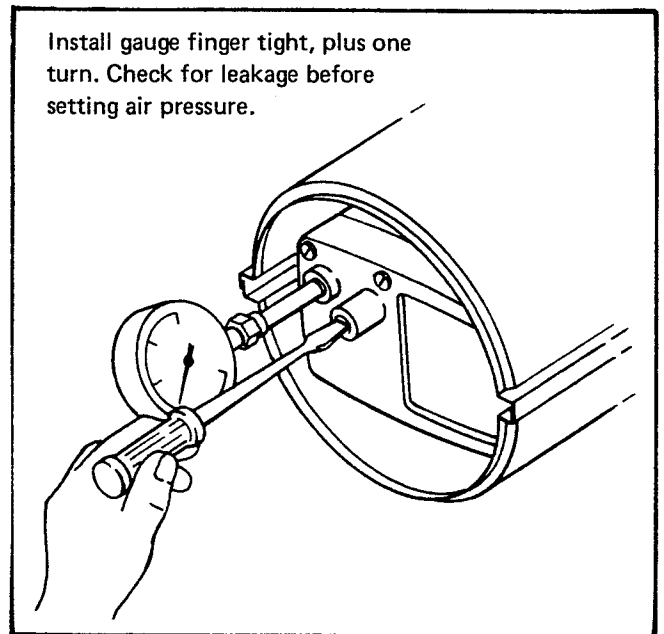


Figure P-11, Checking and adjustment of Air Pump Pressure

1. Remove the plug from the air filter housing, and install the pressure gauge into the hole. See Figure P-11.

2. Plug the heater in and allow it to burn.

3. The pump pressure must be set at 4.0 PSI as shown on the decal. If not, adjust the pressure relief valve.

4. To adjust the pump pressure, screw the valve stem in to raise the pressure; out to lower it.

5. After pressure is set, remove the gauge and replace the plug.

OPTIONAL ACCESSORIES

- | | |
|------------|-------------------|
| 583-409960 | Pressure gauge |
| 583-401010 | Timer Module |
| 583-401020 | Thermostat Module |
| 583-401030 | Comfort Center |

PARTS AVAILABLE - NOT SHOWN

- | | |
|------------|----------------------------|
| M50832-08 | Decal, Tradename L.H. |
| M50832-09 | Decal, Tradename R.H. |
| M50839 | Decal, Fuel |
| M51138-06 | Decal, Wiring Diagram |
| M51145-01 | Decal, General Information |
| M29870-128 | Manual, Instruction |

Sears

**OWNERS
MANUAL**

SERVICE

**MODEL NO.
583.400070**

**HOW TO ORDER
REPAIR PARTS**

**SEARS
PORTABLE HEATER**

Now that you have purchased your portable heater, should a need ever exist for repair parts or service, simply contact any Sears service center. Be sure to provide all pertinent facts when you call or visit.

The model and serial number of your portable heater will be found on a decal located on top of the Heater towards the rear.

**WHEN ORDERING REPAIR PARTS,
ALWAYS GIVE THE FOLLOWING INFORMATION:**

1. Part Number
2. Model Number
3. Part Description
4. Name of Merchandise

If the parts you need are not stocked locally, your order will be electronically transmitted to a Sears Repair Parts Distribution Center for "expedited handling."